

KleanAire Oil Bath Aircleaner



Installation Instructions

- The oil bath aircleaner must only be installed vertically
- The base of the unit must not be flushed against any surface of the equipment and a 80mm clearance is recommended to enable routine maintenance.
- Ensure that oil is filled to the marked level before using.
- Continuous inclination (during operation) of no more than 35 degree.
- It can be used for 100-500 hours depending on the severity of the working environment.

Fill the pan with oil up to the marked level indicated , suggest using the same grade oil as the engine oil.

Oil Volume : KAB24 0.4L ; KAB26 1.5L ; KAB28 /KAB48 2.1L ;
KAB68 3.8L ; KAB88 4.8L ; KAB108 7.5L.

KAB68 Oil level indicated



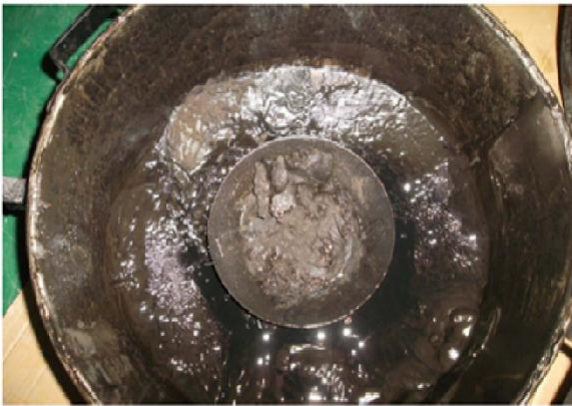
KAB88 Oil level indicated (inside lower casing)



Maintenance

- * Maintenance period is 100-500 hours depending on the severity of working condition.
- * Allow ten minutes after turning off engine for oil to settle in the pan.
- * Release the fastening clips . remove the lower casing and dispose the oil and sludge in a appropriate manner.
- * Remove the lower mesh and clean with diesel fuel or kerosene; Immersion of the whole mesh component in diesel oil or kerosene is recommended for best cleaning results.
- * Drip dry or blow dry the mesh with compressed air before re-assembling the unit;
- * Refill the pan with oil up to the marked level indicated;
- * Ensure all the fastening clips are secured before using.

**Before
Cleaning**



**After
Cleaning**

